

**HAMMOCK RESERVE COMMUNITY DEVELOPMENT DISTRICT**  
***AMENDED AND RESTATED***  
***RULES RELATING TO PARKING AND PARKING ENFORCEMENT***

---

**In accordance with Chapter 190, *Florida Statutes*, and on September 4, 2025, at a duly noticed public meeting, the Board of Supervisors of the Hammock Reserve Community Development District (“District”) adopted the following policy to govern parking and parking enforcement on certain District property (the “Rule” or “Policy”). This Rule repeals and supersedes all prior rules and/or policies governing the same subject matter.**

---

**SECTION 1. INTRODUCTION.** The District finds that Oversized Vehicles, Vessels Recreational Vehicles, and Abandoned/Broken-Down Vehicles Parked on certain of its property cause hazards and danger to the health, safety and welfare of District residents, paid users and the public. This Rule is intended to provide the District with a means to remove such Oversized Vehicles, Vessels, Recreational Vehicles, and Abandoned/Broken-Down Vehicles which are Parked in a manner which violates this Rule. This Rule does not govern Parking on private residential lots.

**SECTION 2. DEFINITIONS.**

- A. *Vehicle.*** Any mobile item which normally uses wheels, whether motorized or not. This term shall include, but shall not be limited to, Oversized Vehicles, Recreational Vehicles, and Abandoned/Broken-Down Vehicles.
- a. *Oversized Vehicle.*** As used herein, “Oversized Vehicle” shall mean the following:
- i. Any Vehicle or Vessel heavier or larger in size than a one-ton, dual rear wheel pick-up truck;
  - ii. Motor Vehicles with a trailer attached;
  - iii. Motor coaches/homes;
  - iv. Travel trailers, camping trailers, park trailers, fifth-wheel trailers, semi-trailers, or any other kind of trailer;
  - v. Mobile homes or manufactured homes.
- b. *Abandoned/Broken-Down Vehicle.*** A vehicle that has no license plate, has expired registration, is visibly not operational, or has not moved for a period of seven (7) days.
- c. *Recreational Vehicle.*** A vehicle designed for recreational use, which includes motor homes, campers and trailers relative to same.
- B. *Vessel.*** Every description of watercraft, barge, or airboat used or capable of being used as a means of transportation on water.
- C. *Park(ed)/(ing).*** A Vehicle or Vessel left unattended by its owner or user or attended by its owner or user but kept stationary for a period of an hour or more.
- D. *Tow-Away Zone.*** District property for which the District is authorized to initiate a towing and/or removal action.
- E. *Overnight.*** Between the hours of 10:00 p.m. and 6:00 a.m. daily.

**SECTION 3. DESIGNATED PARKING AREAS.** Parking is permitted only in Designated Parking Areas, as indicated by asphalt markings for Parking spaces or signage and as indicated on the map attached hereto as **Exhibit A** for certain on-street Parking areas. On-street Parking is expressly prohibited on District roadways except where indicated. Certain Designated Parking Areas may have restrictions on Parking during certain times or for certain types of vehicles and vessels as described herein. **Any Vehicle Parked on District property, including District roads, if any, must do so in compliance with all laws, ordinances, and codes, and shall not block access to driveways, property entrances, or fire hydrants and shall Park in the appropriate direction.** All drivers are responsible for knowing state and local laws, ordinances, and codes related to Parking. Violations of state or local laws may result in citations, towing, or other legal action as permitted by law.

**SECTION 4. ESTABLISHMENT OF TOW-AWAY ZONES.** All District property which is not explicitly designated for Parking, or which is designated for Parking but subject to restrictions as described herein, shall hereby be established as “Tow-Away Zones.”

**SECTION 5. EXCEPTIONS.**

- A. OVERNIGHT ON-STREET AND OVERFLOW PARKING.** Oversized Vehicles, Recreational Vehicles, and Vessels are not permitted to be Parked on-street or in overflow areas Overnight and shall be subject to towing at Owner’s expense.
- B. OVERNIGHT AMENITY PARKING.** Vehicles may Park in the Designated Parking Areas of amenity facilities depicted in **Exhibit A** during the open hours of operations of such amenity facilities, including any District-authorized special events occurring outside of regular hours of operation. Otherwise, no Overnight Parking is permitted at the amenity facilities.
- C. ABANDONED/BROKEN-DOWN VEHICLES.** Abandoned/Broken-Down Vehicles may not be Parked on District property at any time.
- D. VENDORS/CONTRACTORS.** The District Manager or his/her designee may authorize vendors/consultants in writing to Park company vehicles in order to facilitate District business. All vehicles so authorized must be identified by a Parking pass issued by the District.
- E. DELIVERY VEHICLES AND GOVERNMENTAL VEHICLES.** Delivery vehicles, including but not limited to, U.S.P.S., U.P.S., Fed Ex, moving company vehicles, and lawn maintenance vendors may Park on District property while actively engaged in the operation of such businesses. Vehicles owned and operated by any governmental unit may also Park on District property while carrying out official duties.
- F. MANNER OF PARKING.** Vehicles and Vessels of any kind may not be Parked such that they utilize additional spaces, block access to District property, prevent the safe and orderly flow of traffic, obstruct the ability of emergency vehicles to access roadways or property, cause damage to the District’s property, restrict the normal operation of the District’s business, or otherwise poses a danger to the District, its residents and guests, the general public, or the property of same. All Parking must comply with all state and local laws and ordinances.

**SECTION 6. TOWING/REMOVAL PROCEDURES; ENFORCEMENT.**

- A. SIGNAGE AND LANGUAGE REQUIREMENTS.** Notice of the Tow-Away Zones shall be posted on District property in the manner set forth in Section 715.07, *Florida Statutes*. Such signage is to be placed in conspicuous locations, in accordance with Section 715.07, *Florida Statutes*.
- B. TOWING/REMOVAL AUTHORITY.** The District may engage a towing company to tow/remove any Vehicle or Vessel improperly Parked in a Tow-Away Zone at the owner's expense. The Vehicle or Vessel shall be towed/removed by the towing service in accordance with Florida law, specifically the provisions set forth in Section 715.07, *Florida Statutes*.
- C. AGREEMENT WITH AUTHORIZED TOWING SERVICE.** The District Manager is hereby authorized to enter into and maintain an agreement with a firm authorized by Florida law to tow/remove unauthorized vehicles and in accordance with Florida law and with the policies set forth herein.
- D. AMENITY SUSPENSION.** The District may, in its discretion, suspend the amenity privileges of the owner or operator of any Vehicle or Vessel Parked in violation of this Rule, in accordance with the District's adopted *Suspension and Termination of Privileges Rule*.

**SECTION 7. PARKING AT YOUR OWN RISK.** Vehicles, Vessels or Recreational Vehicles may be Parked on District property pursuant to this Rule, provided however that the District assumes no liability for any theft, vandalism and/or damage that might occur to personal property and/or to such Vehicles.

**SECTION 8. AMENDMENTS; DESIGNATION OF ADDITIONAL TOW-AWAY ZONES OR DESIGNATED PARKING AREAS.** The Board in its sole discretion may amend these Rules Related to Parking and Parking Enforcement from time to time to designate new Tow-Away Zones or Designated Parking Areas. Such designations of new Tow-Away Zones and Designated Parking Areas are subject to proper signage and notice prior to enforcement of these Rules in such areas.

**EXHIBIT A – *Designated Parking Areas***

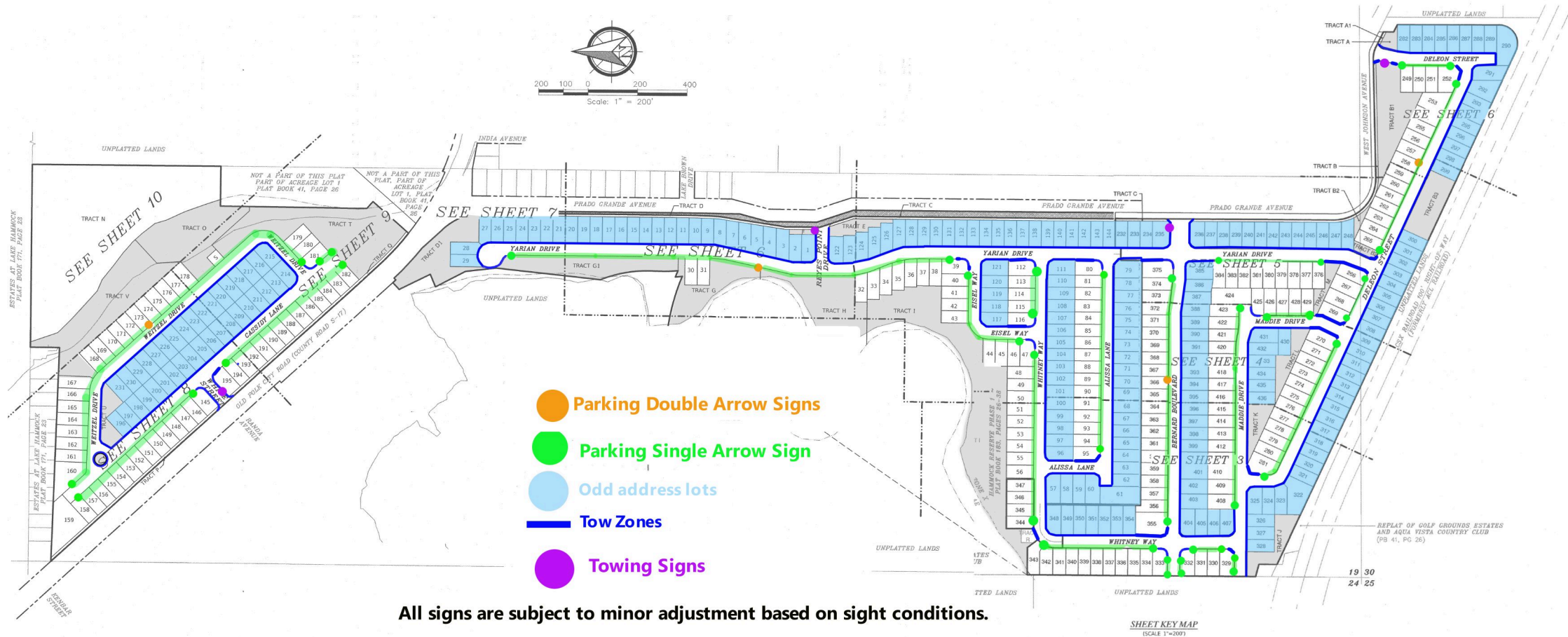
Effective date: September 4, 2025

**EXHIBIT A**  
***Designated Parking Areas***

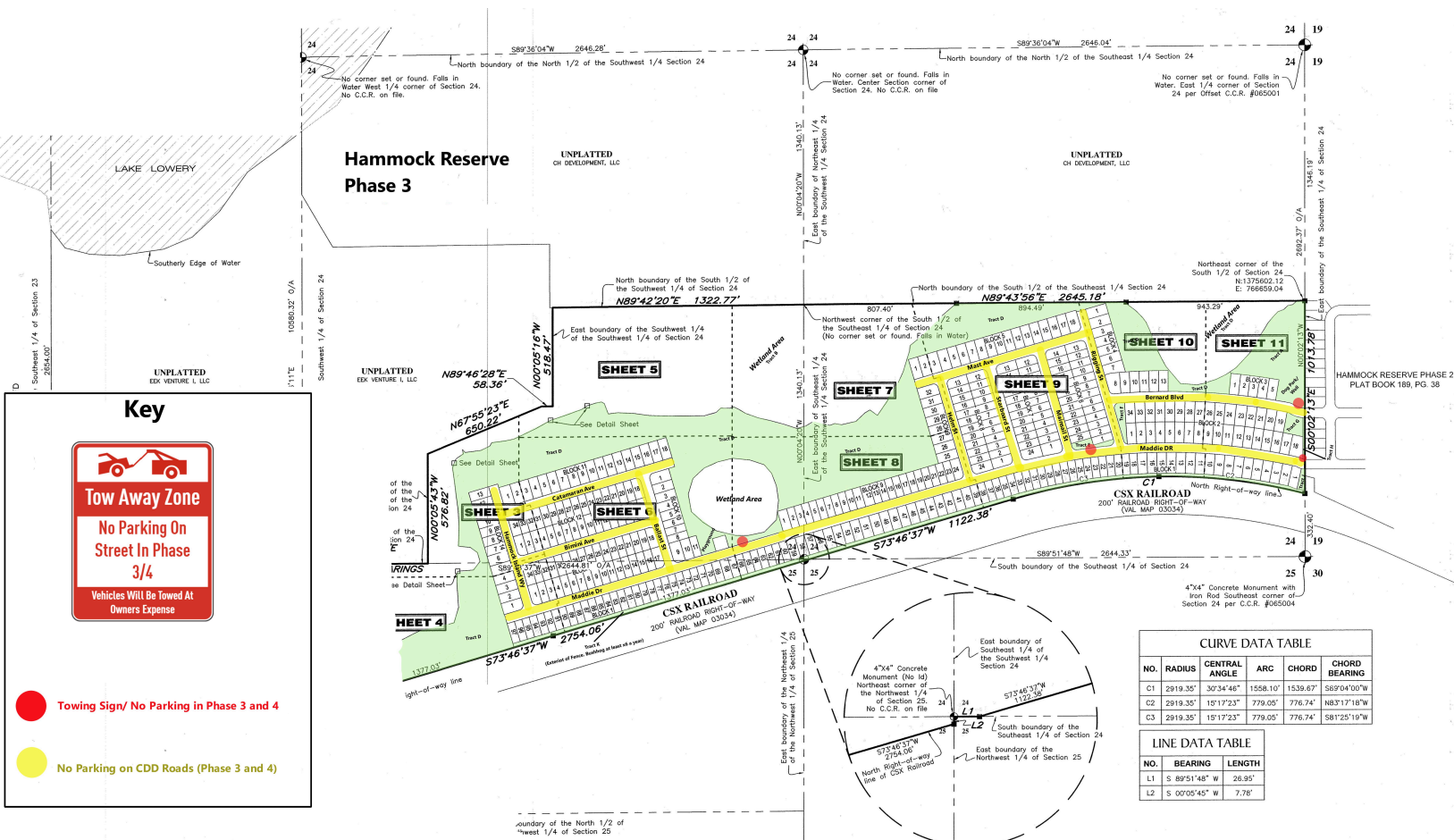


## Hammock Reserve CDD

### Tow Policy - No Parking on ODD address side of street







# Hammock Reserve Phase 4

