

**HAMMOCK RESERVE COMMUNITY DEVELOPMENT DISTRICT**  
**RULES RELATING TO PARKING AND PARKING ENFORCEMENT**

---

In accordance with Chapter 190, *Florida Statutes*, and on January 3, 2023, at a duly noticed public meeting, the Board of Supervisors of the Hammock Reserve Community Development District (“District”) adopted the following policy to govern parking and parking enforcement on certain District property (the “Policy”). This Policy repeals and supersedes all prior rules and/or policies governing the same subject matter.

---

**SECTION 1. INTRODUCTION.** The District finds that parked Commercial Vehicles, Vehicles, Vessels and Recreational Vehicles (hereinafter defined) on certain of its property (hereinafter defined) cause hazards and danger to the health, safety and welfare of District residents, paid users and the public. This Policy is intended to provide the District’s residents and paid users with a means to remove such Commercial Vehicles, Vehicles, Vessels and Recreational Vehicles from District designated Tow-Away Zones consistent with this Policy and as indicated on **Exhibit A** attached hereto.

**SECTION 2. DEFINITIONS.**

- A. *Commercial Vehicle.* Any mobile item which normally uses wheels, whether motorized or not, that (i) is titled, registered or leased to a company and not an individual person, or (ii) is used for business purposes even if titled, registered or leased to an individual person.
- B. *Vehicle.* Any mobile item which normally uses wheels, whether motorized or not.
- C. *Vessel.* Every description of watercraft, barge, or airboat used or capable of being used as a means of transportation on water.
- D. *Recreational Vehicle.* A vehicle designed for recreational use, which includes motor homes, campers and trailers relative to same.
- E. *Parked.* A Vehicle, Vessel or Recreational Vehicle left unattended by its owner or user.
- F. *Tow-Away Zone.* District property in which parking is prohibited and in which the District is authorized to initiate a towing and/or removal action.
- G. *Overnight.* Between the hours of 10:00 p.m. and 6:00 a.m. daily.

**SECTION 3. DESIGNATED PARKING AREAS.** Parking is permitted in designated parking areas, as indicated by asphalt markings for parking spaces. On-street parking is only authorized on the even-numbered side of the street (as indicated by address numbers). On-street parking is expressly prohibited on the odd-numbered side of the street (as indicated by address numbers). **Any Vehicle parked on District Property, including District roads, if any, must do so in compliance with all laws, ordinances, and codes.**

**SECTION 4. ESTABLISHMENT OF TOW-AWAY ZONES.** The odd-numbered side of the street (as indicated by address numbers) and those areas within the District’s boundaries depicted in **Exhibit A**, which is incorporated herein by reference, are hereby established as “Tow-Away Zones” for all Vehicles, including Commercial Vehicles, Vessels, Recreational Vehicles as set forth in Section 5 herein (“**Tow-Away Zone**”).

**SECTION 5. EXCEPTIONS.**

- A. ON-STREET PARKING EXCEPTIONS.** Abandoned and/or broken down Vehicles are not permitted to be parked on-street at any time and are subject to towing at the Owner’s expense. Commercial Vehicles, Recreational Vehicles, and Vessels are not permitted to be parked on-street Overnight and shall be subject to towing at Owner’s expense.
- B. PARKING DURING AMENITY HOURS.** Vehicles may park in the designated parking areas of amenity facilities depicted in **Exhibit A** during the open hours of operations of such amenity facilities, including any District-authorized special events occurring outside of regular hours of operation. Otherwise, no Overnight parking is permitted at the amenity facilities.
- C. PARKING AT MAILBOXES.** Vehicles may park at the mailboxes for a maximum of five (5) minutes.
- D. VENDORS/CONTRACTORS.** The District Manager or his/her designee may authorize vendors/consultants in writing to park company vehicles in order to facilitate District business. All vehicles so authorized must be identified by a Parking Pass issued by the District.
- E. DELIVERY VEHICLES AND GOVERNMENTAL VEHICLES.** Delivery vehicles, including but not limited to, U.S.P.S., U.P.S., Fed Ex, moving company vehicles, and lawn maintenance vendors may park on District property while actively engaged in the operation of such businesses. Vehicles owned and operated by any governmental unit may also park on District Property while carrying out official duties.

**SECTION 6. TOWING/REMOVAL PROCEDURES.**

- A. SIGNAGE AND LANGUAGE REQUIREMENTS.** Notice of the Tow-Away Zones shall be approved by the District’s Board of Supervisors and shall be posted on District property in the manner set forth in Section 715.07, *Florida Statutes*. Such signage is to be placed in conspicuous locations, in accordance with Section 715.07, *Florida Statutes*.
- B. TOWING/REMOVAL AUTHORITY.** To effect towing/removal of a Commercial Vehicle, Vehicle, Vessel or Recreational Vehicle, the District Manager or his/her designee must verify that the subject Commercial Vehicle, Vehicle, Vessel or Recreational Vehicle was not authorized to park under this rule in the Overnight Parking Areas and then must contact a firm authorized by Florida law to tow/remove Commercial Vehicle, Vehicles, Vessels and Recreational Vehicles for the removal of such unauthorized vehicle at the owner’s expense. The Commercial Vehicle, Vehicle, Vessel or Recreational Vehicle shall be towed/removed by the firm in accordance with Florida law, specifically the provisions set

forth in Section 715.07, *Florida Statutes*. Notwithstanding the foregoing, a towing service retained by the District may tow/remove any vehicle parked in the Tow-Away Zone.

- C. **AGREEMENT WITH AUTHORIZED TOWING SERVICE.** The District's Board of Supervisors is hereby authorized to enter into and maintain an agreement with a firm authorized by Florida law to tow/remove unauthorized vehicles and in accordance with Florida law and with the policies set forth herein.

**SECTION 7. PARKING AT YOUR OWN RISK.** Vehicles, Vessels or Recreational Vehicles may be parked on District property pursuant to this rule, provided however that the District assumes no liability for any theft, vandalism and/ or damage that might occur to personal property and/or to such vehicles.

**SECTION 8. AMENDMENTS; DESIGNATION OF ADDITIONAL TOW-AWAY ZONES.** The Board in its sole discretion may amend these Rules Related to Parking and Parking Enforcement from time to time to designate new Tow-Away Zones as the District acquires additional common areas. Such designations of new Tow-Away Zones are subject to proper signage and notice prior to enforcement of these rules on such new Tow-Away Zones.

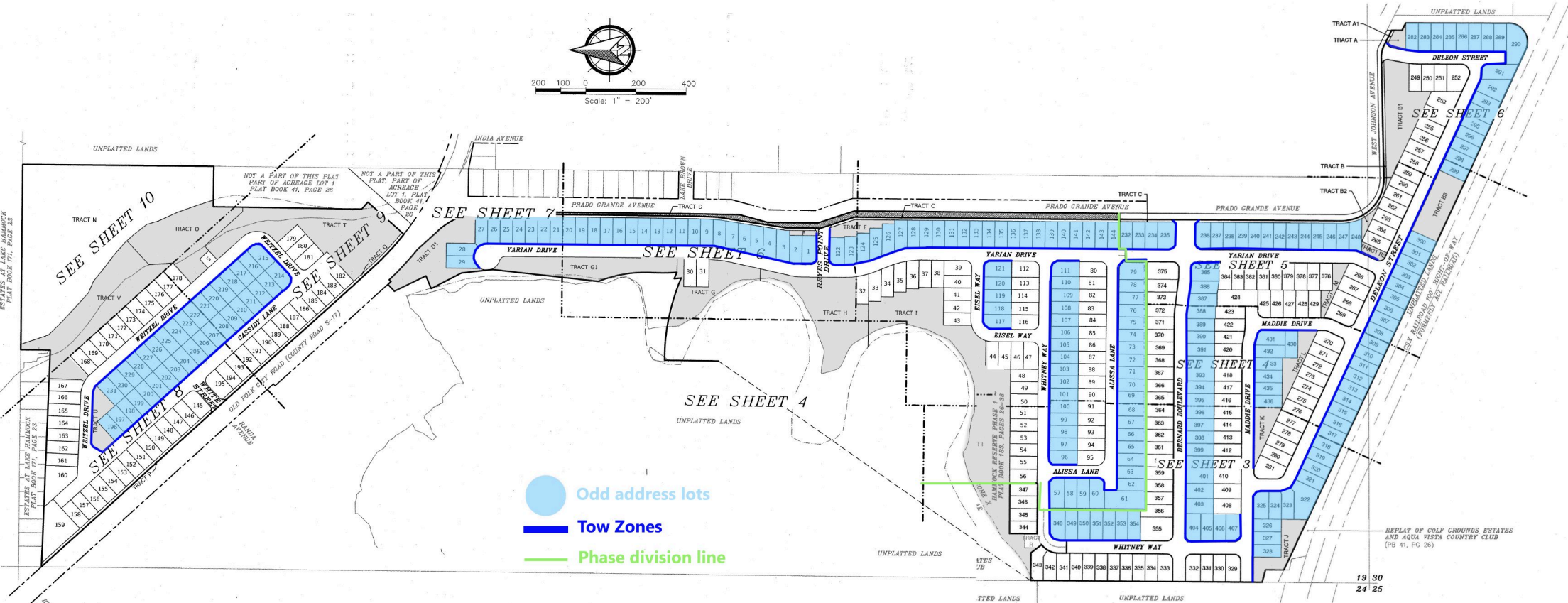
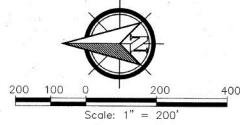
**EXHIBIT A: *Tow-Away Zones (highlighted areas)***

Effective date: January 3, 2023

**EXHIBIT A**  
*Tow Away Zones*

# Hammock Reserve CDD

## Tow Policy - No Parking on ODD address side of street



- Odd address lots
- ▬ Tow Zones
- ▬ Phase division line

**SHEET KEY MAP**  
(SCALE 1"=200')

**SHEET KEY MAP**  
(SCALE 1"=200')

19 30  
24 25

ESTATES AT LAKE HAMMOCK  
PLAT BOOK 171, PAGE 23

ESTATES AT LAKE HAMMOCK  
PLAT BOOK 171, PAGE 23

NOT A PART OF THIS PLAT  
PART OF ACRESAGE LOT 1  
PLAT BOOK 41, PAGE 26

NOT A PART OF THIS PLAT  
PART OF ACRESAGE LOT 1  
PLAT BOOK 41, PAGE 26

REPLAT OF GOLF GROUNDS ESTATES  
AND AQUA VISTA COUNTRY CLUB  
(PB 41, PG 26)